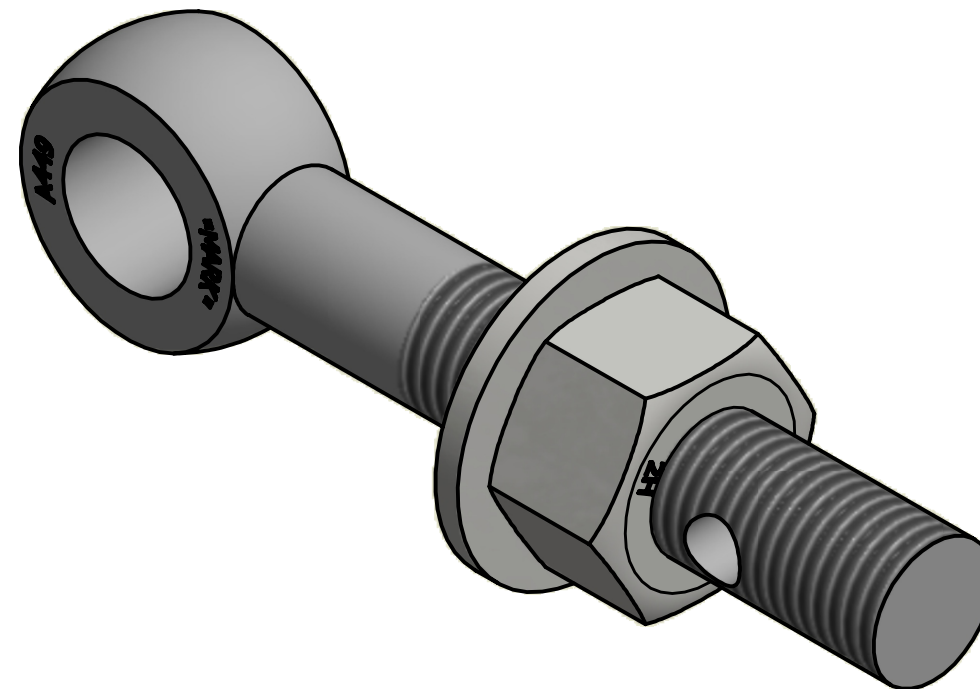
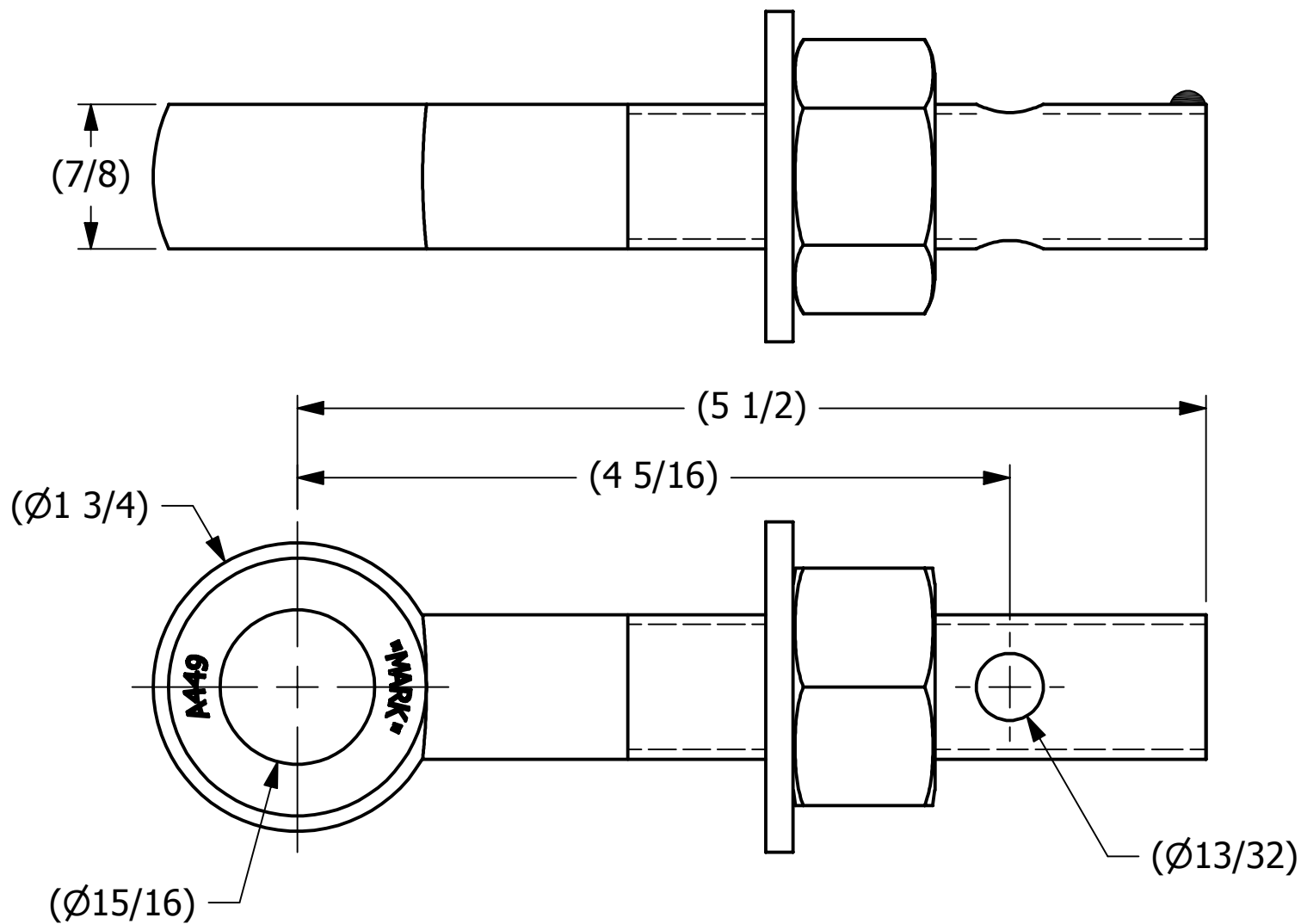


SALES DRAWING

SALES DRAWING



ISOMETRIC VIEW

NOTES:

1. APPLY JET LUBE(PFPE GREASE) TO WORKING THREAD AREA, THE BOTTOM FACE OF THE NUT, AND THE TOP FACE OF THE WASHER. THEN APPLY THREAD PROTECTION.
2. BOLT STRENGTH EQUIVALENT TO SAE J429 GRADE 5.
3. WASHER IS ASTM F436 HARDENED.

THIS PRINT, PROPERTY OF SALCO PRODUCTS INC., CONTAINS PROPRIETARY INFORMATION AND MUST NOT BE COPIED, REPRODUCED, OR USED DETRIMENTALLY TO OUR INTEREST.

UNLESS OTHERWISE SPECIFIED DIMENSIONAL TOLERANCES		DRAWN BY:	CHL	<div><div></div><div>SALCO PRODUCTS, INC.</div></div>					
FRACTIONAL:	±1/16	CHECKED BY:	ACC						
X.XX:	±.03	PROTOTYPE BY:	CHL	PART NAME: EYEBOLT ASSEMBLY 7/8"X5 1/2"					
X.XXX:	±.015	PROTOTYPE DATE:	10/12/2006	MATERIAL: ASTM A449 TYPE 1, CARBON STEEL					
ANGULAR:	±1°	APPROVED FOR PRODUCTION BY:	ACC	PROJECT #:	WAG0365	SHEET #:	1 OF 1	SCALE:	1:1
DEBURR ALL SHARP EDGES. ALL MACHINED SURFACES TO HAVE A 125 RMS FINISH UNLESS NOTED OTHERWISE.				DRAWING #:	PART #:				
THIRD ANGLE PROJECTION				B22633		EB7855XHAG5L			
		PRODUCTION DATE:	4/12/2007						